

ROAD TO RESIDENCY

[MS-III]

NOVEMBER - MARCH

- Begin working on or updating your CV
- Explore and finalize your specialty choices



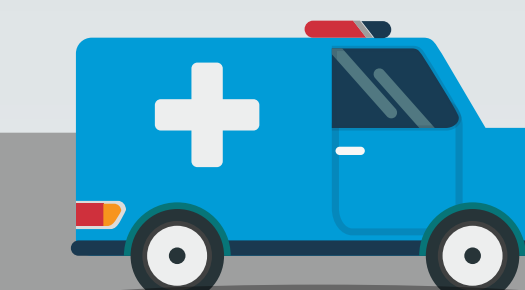
APRIL

- Begin researching residency programs
- Write your personal statement



MAY - JUNE

- Schedule and prepare for the USMLE Step 2 Exam (Discuss the best time with your advisor)
- Receive your ERAS token from your Designated Dean's Office
- Early June: Create a personal profile in ERAS
- Register for early match programs if applicable
- Schedule the MSPE process with your student affairs office
- Identify and contact faculty to request letters of recommendation



[MS-IV]

JULY

- Narrow down residency program choices and gather further information

OCTOBER

- Oct. 1: MSPEs released to all programs in ERAS
- Residency interviews are administered through January



SEPTEMBER

- Early September: Start applying to ACGME-accredited residency programs only.
- Sept. 15: Resident programs begin receiving student applications through ERAS
- Sept. 15 - Nov. 30: Register for the Match
- Start scheduling and preparing for interviews

NOVEMBER - DECEMBER

- Residency Interviews Continue
- Nov. 30: Standard Registration Deadline for the Main Residency Match
- Military match results become available
- Begin preparing your rank order list (ROL)

JANUARY - FEBRUARY

- Enter ROL for the early match by the January deadline
- January: Urology match results become available
- Submit ROL for the Main Residency Match by the mid-to-late February deadline
- Friday: NMS/AOA match results become available
- Residency interviews continue through January

MARCH

- Monday of Match Week:
 - Applicants can log into the R3 system to see whether they matched to a program
 - SOAP begins
- Tuesday of Match Week: Programs create SOAP preference lists
- Wednesday of Match Week:
 - SOAP Round 1
 - SOAP Round 2

- Thursday of Match Week:
 - SOAP Round 3
 - SOAP concludes
 - List of Unfilled Programs will be available in the R3 system
- Friday of Match Week: Match Day ceremony and applicant find out where they matched



APRIL - JUNE

- Sign contract with residency program
- Graduate and prepare to begin residency
- Start preparing to move

GENERAL COMPONENTS OF MOST RESIDENCY PROGRAM APPLICATIONS

STUDENTS' RESPONSIBILITY:

- Curriculum vitae (CV)
- Personal Statement
- Letters of Recommendation (LoRs)

MEDICAL SCHOOLS' RESPONSIBILITY:

- MSPE
- Medical School Transcript
- USMLE Transcript
- COMLEX-USA Transcript
- Medical School Transcript